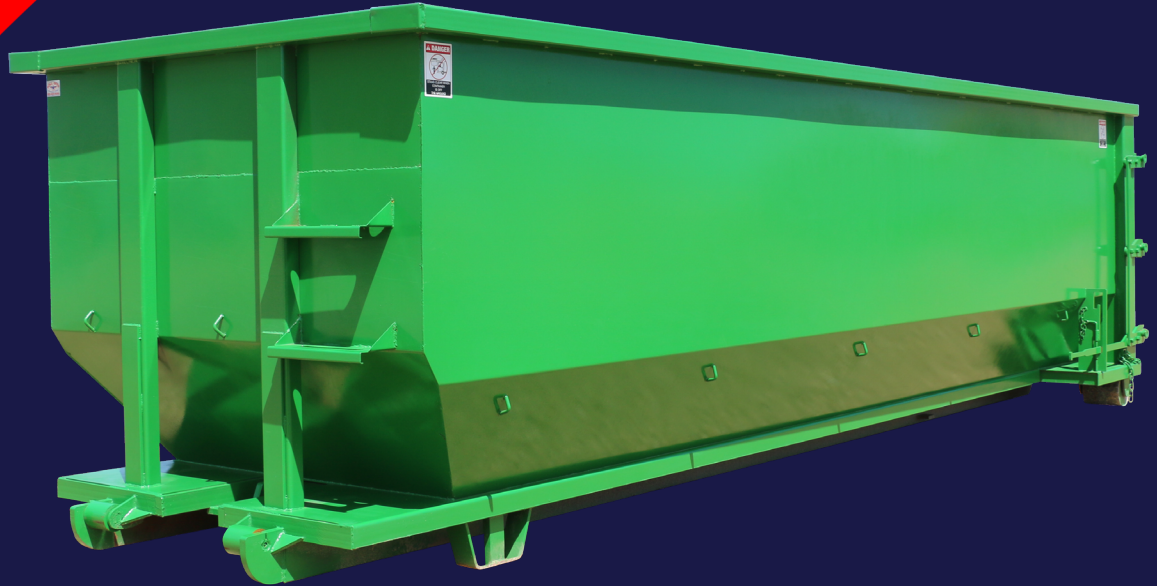




Bathtub Roll-Offs



Features

- Sizes: 10YD to 40YD
- Stronger formed single piece floors
- 3" Structural channel cross-cembers
- Single piece wall construction (no seams) on 20YD and 30YD bathtubs
- 1/2" Push plates
- Heavy duty hinges and latch system

Options

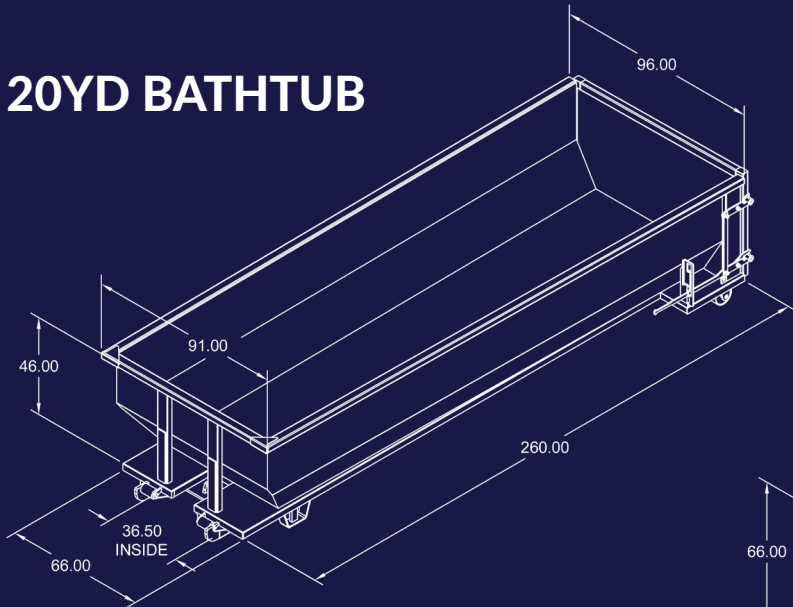
- A-frame, deadlift, cable and A-frame
- Front and rear rollers
- Watertight construction

	Competition Series	Standard Bathtub	Heavy Duty Bathtub
Floor	3/16"	3/16"	1/4"
Wall	10 ga	10 ga	3/16"
Crossmembers	24"	18"	18"
Long Sills	6" x 2" x 3/16"	6" x 2" x 3/16"	6" x 2" x 1/4"
Top Rail	4" x 3" x 11 ga	4" x 3" x 3/16"	4" x 4" x 1/4"
Door Sheet	12 ga	12 ga	3/16"
Head Sheet	12 ga	12 ga	3/16"
Hook	1 1/4"	1 1/4"	1 1/4"
Hook Plate	7/8"	7/8"	7/8"

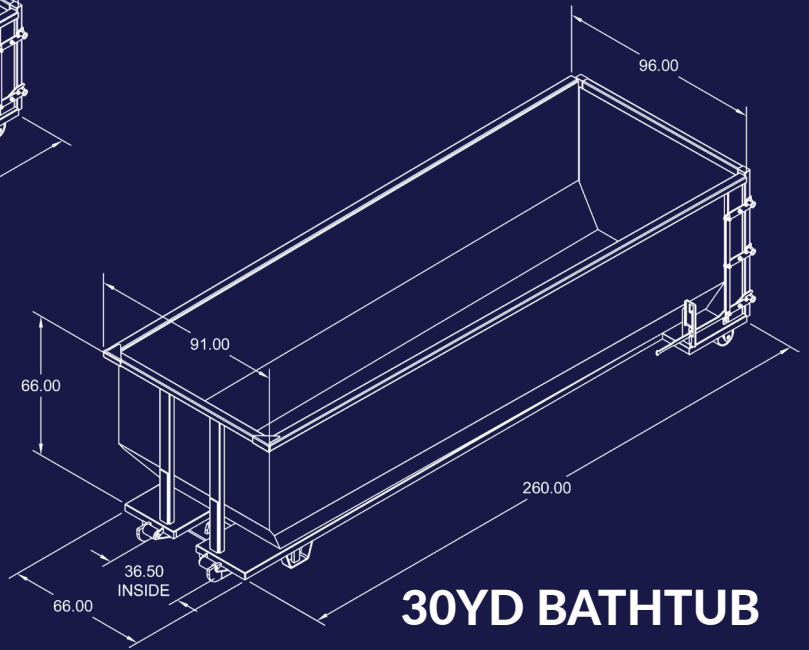




20YD BATHTUB



30YD BATHTUB



40YD BATHTUB

